

# UL Citizens' Assembly

# PRIME Progression Risk/Resilience In Marginalised Environments



## the challenge

Schools are primary vehicle for skills acquisition and human development in young children.

Every year, schools admit children with highly variable skills and needs.

Schools need to know and evidence children's needs to plan effective teaching, supports and interventions

## the solution

Play-based skills assessment at the point of school entry – with repeat assessments every May and September.

Children followed through their primary school experience

True longitudinal design, evidencing needs and effective interventions



## the innovation

Instead of sending surveys home, which may seem complicated and often don't get returned, we re-create the skills assessment as a series of interactive, fun games and puzzles for children to play.

This takes place in the school, during the school day.

## what skills?



Gross motor skills



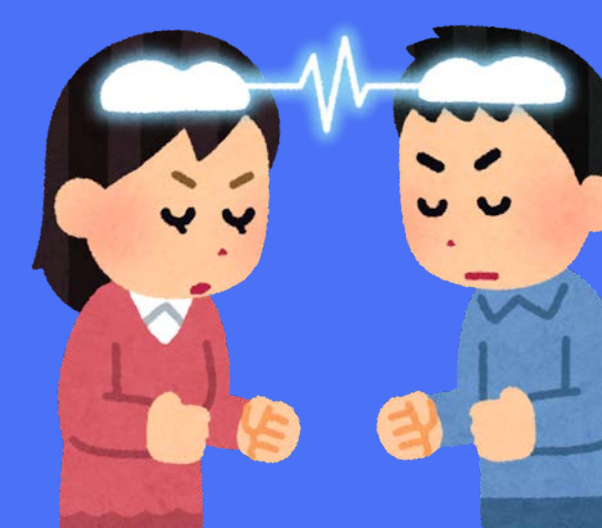
Fine motor skills

problem solving



personal social skills

communication



## the team

